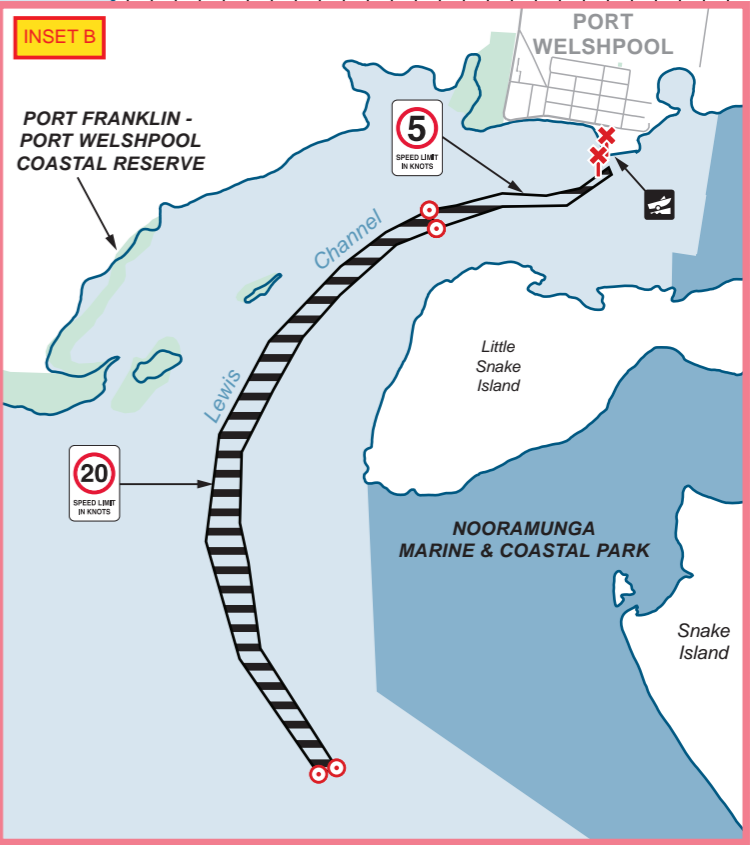
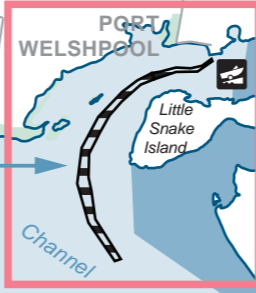
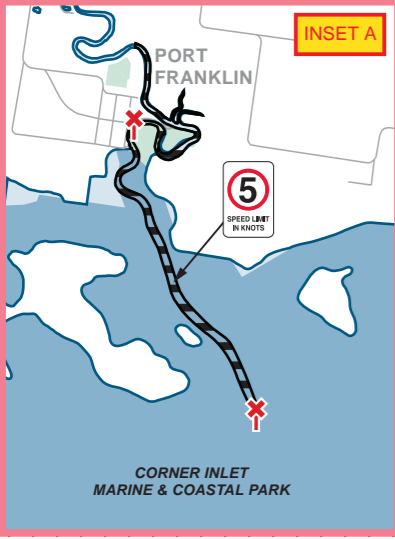


Vessels departing Lewis Channel
must give way to any vessel that is navigating the Toora Channel

Vessels intending to proceed outward
A vessel 10m or more in length and in the Lewis Channel proceeding outward from the Shipping Pier or the Port Welshpool Boat Harbour, must not proceed whilst a vessel of 25m or more is proceeding inward in that channel.
A vessel less than 10m length and departing from the Port Welshpool Boat Harbour, proceeding outward must not proceed whilst an inward bound vessel of 25m or more is underway between the Shipping Pier and the Boat Harbour

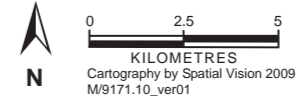
Vessels 25m or more in length inward bound for Port Welshpool
must not enter Lewis Channel whilst a vessel of 25m or more in length is proceeding outward bound in that channel.



THE DESIGNATED PORT OF CORNER INLET AND PORT ALBERT

Waterway Manager - Gippsland Ports Committee of Management Inc. - Surveyed March 2009

- Waters of the Designated Port of Corner Inlet and Port Albert
- Waters outside those specified in Schedule 132
- Speed Limit Zone
- Beacon
- Sign / Post
- Boat Ramp



State Rules: Unless otherwise specified in a Schedule, a person must not operate a vessel in coastal waters or in a port or designated port under the Marine Act 1988 at a speed exceeding 5 knots- (a) within 200 metres of the waters edge except in an access lane or (b) within 50 metres of a wharf, jetty, slipway, diving platform or boat ramp except in an access lane or (c) when passing through a recognised anchorage for small craft.

Disclaimer: This map is based on Schedule 132 of Notice no.1 made under Section 15 (2) of the Marine Act 1988. It details the local vessel operating and zoning rules in place for the Designated Port of Corner Inlet and Port Albert and should be used in conjunction with the Vessel Operating and Zoning Rules available at www.marinesafety.vic.gov.au. Map users should be aware that the rules are subject to change - **this map should not be used for navigational purposes.**

